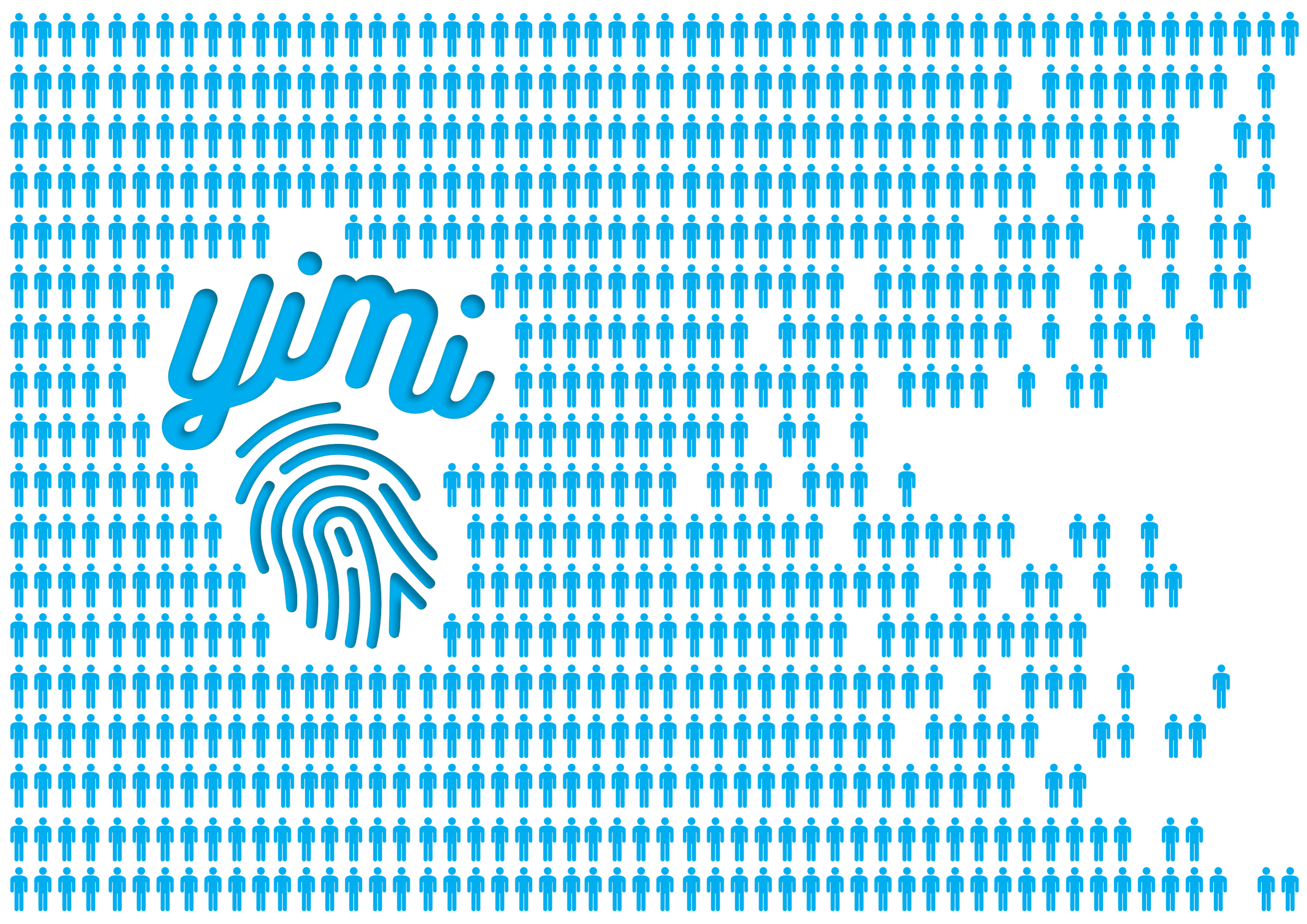




A
**PERSONAL
INFORMATION
SYSTEM**

Yini



1

Fast, effective sharing
of accurate information.

2

Information sharing
strictly controlled by
client.

3

Information sharing
from remote location
possible.

4

No personal information
compromised in the case
of a lost mobile phone.

5

Independant third party
verification and audit trail.

CLIENT
BENEFITS



6

Consolidation of
key personal information.

8

All information shared
encrypted.

7

No additional cost
for client.

9

At no time is
any information
stored online.

CLIENT
BENEFITS



1 Effective and accurate population of client information.

2 Independant third party verification and audit trail.

3 Mitigation of all legal and reputational risk.

4 Low cost and easy integration with existing systems.

SERVICE
PROVIDER
BENEFITS





YiMi SYSTEM





CLIENT APP



**SERVICE PROVIDER
INTERFACE**

YiMi SYSTEM





1

Service provider gets a random number PIN1 from the YiMi PIN server.



CLIENT APP



SERVICE PROVIDER INTERFACE





CLIENT APP



**SERVICE PROVIDER
INTERFACE**



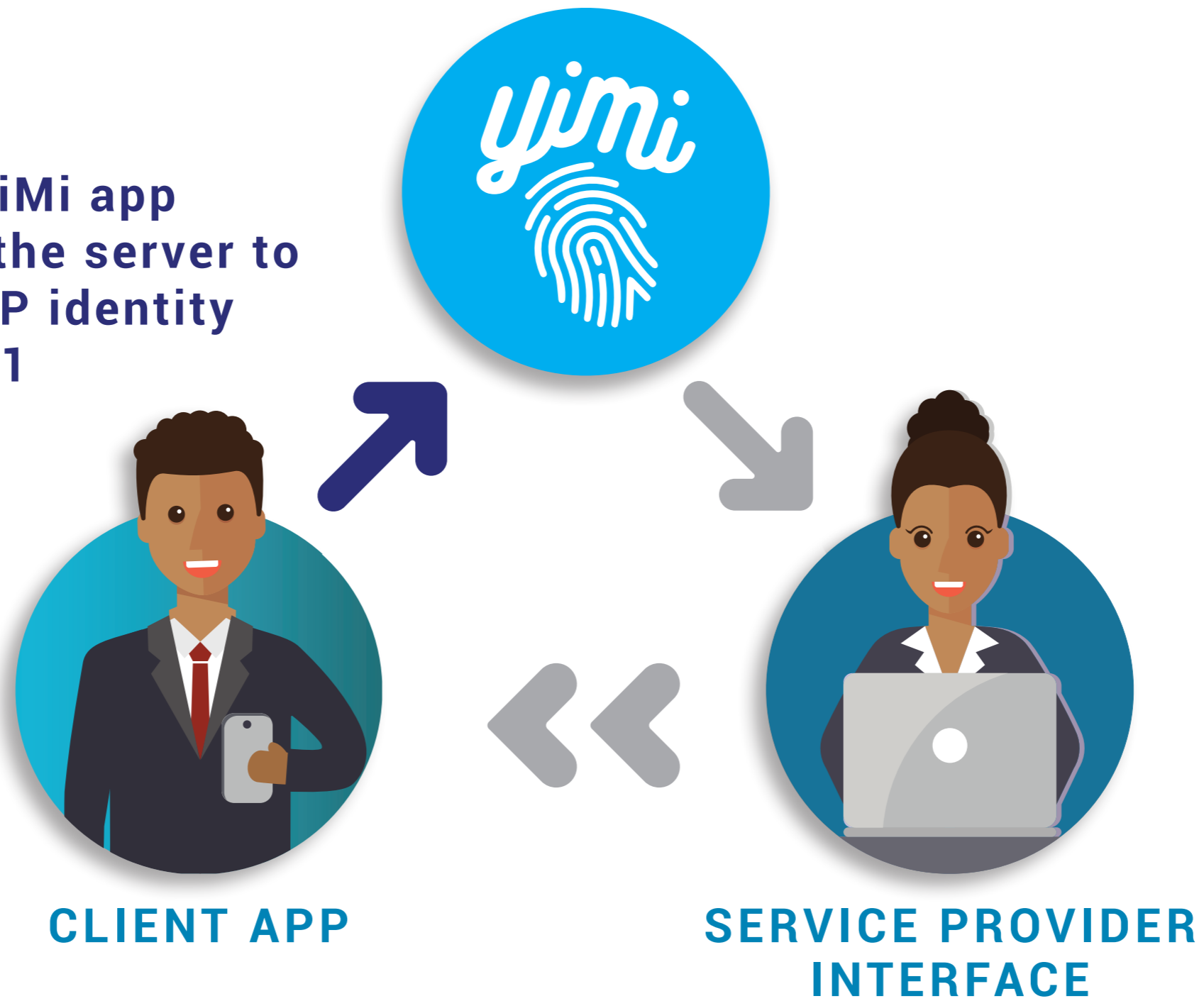
- 2** PIN1 is read out by SP and client enters it on her YiMi app.

YiMi SYSTEM



3

Client's YiMi app contacts the server to confirm SP identity using PIN1



YiMi SYSTEM



4

Client's YiMi app gets a random number PIN2 from the PIN server



CLIENT APP



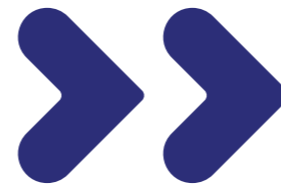
SERVICE PROVIDER
INTERFACE

YiMi SYSTEM





CLIENT APP



**SERVICE PROVIDER
INTERFACE**

5

**PIN2 is read out to SP to
confirm the connection.**

YiMi SYSTEM





6 SP interface sends PIN2 to the YiMi server together with connection information.



CLIENT APP



SERVICE PROVIDER INTERFACE



7

YiMi verifies PIN2 and provides the connection information to the YiMi app



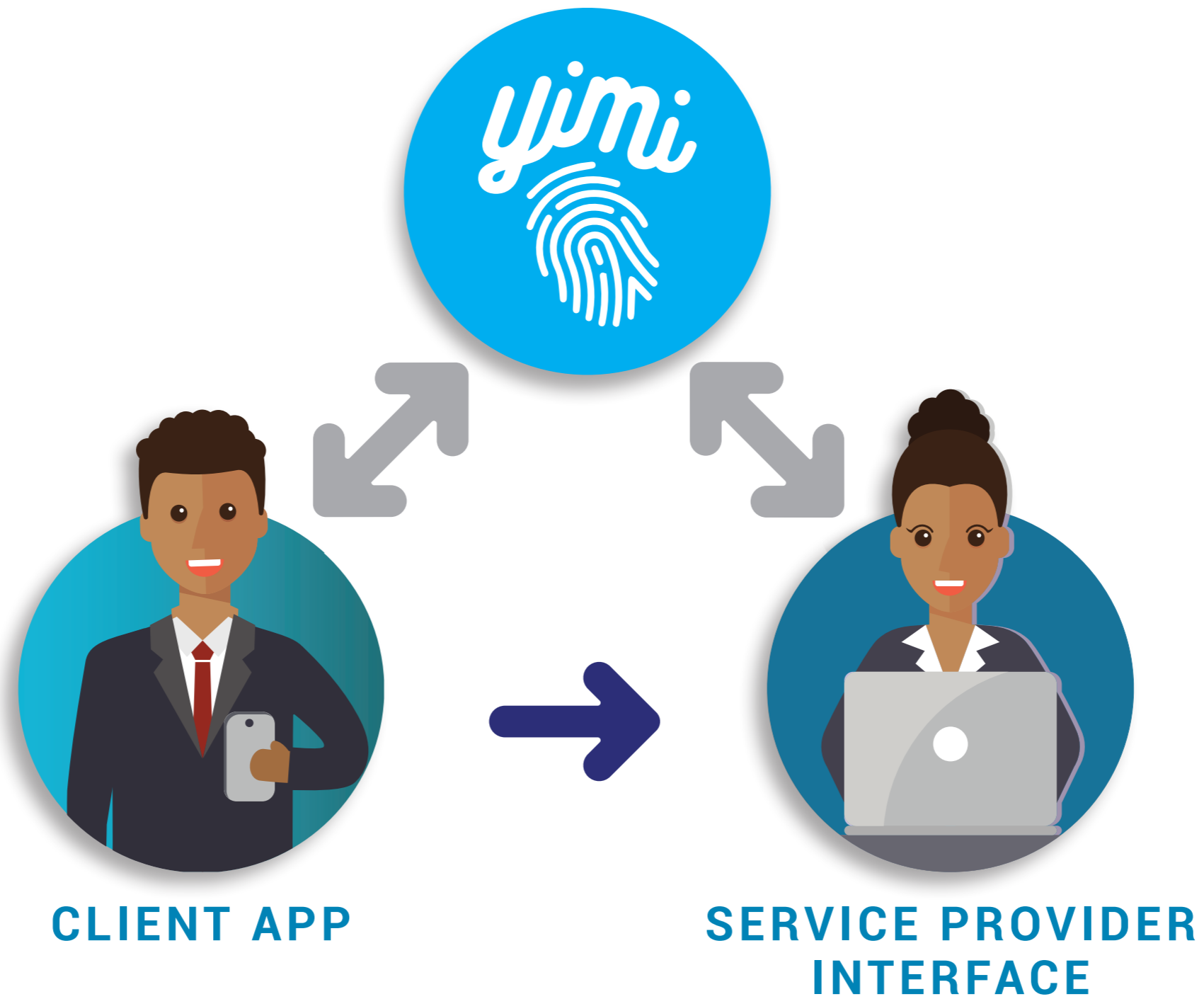
CLIENT APP



SERVICE PROVIDER INTERFACE

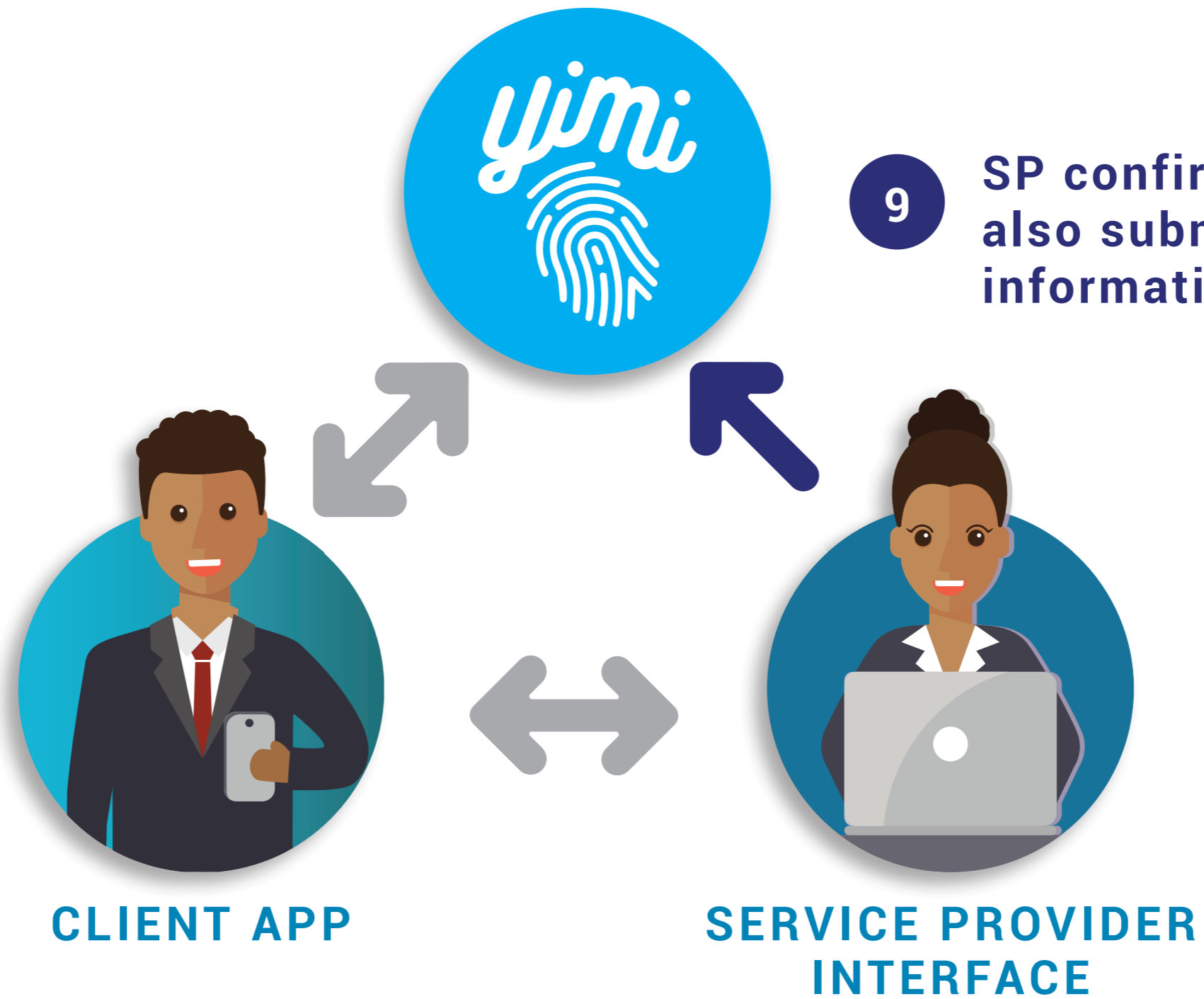
YiMi SYSTEM





- 8 Client releases the information X directly to SP.

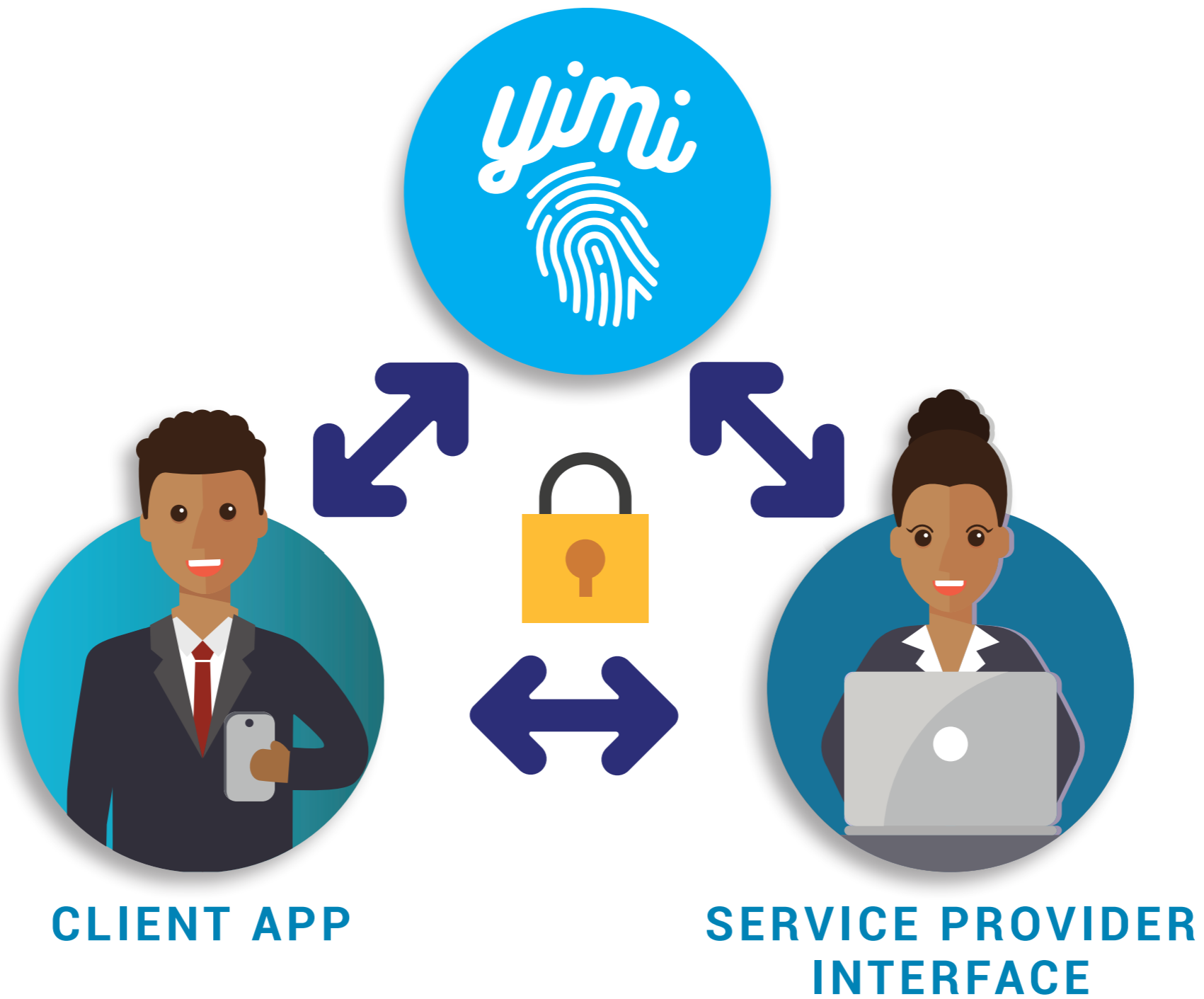




9

SP confirms receipt by also submitting only the information hash #X.



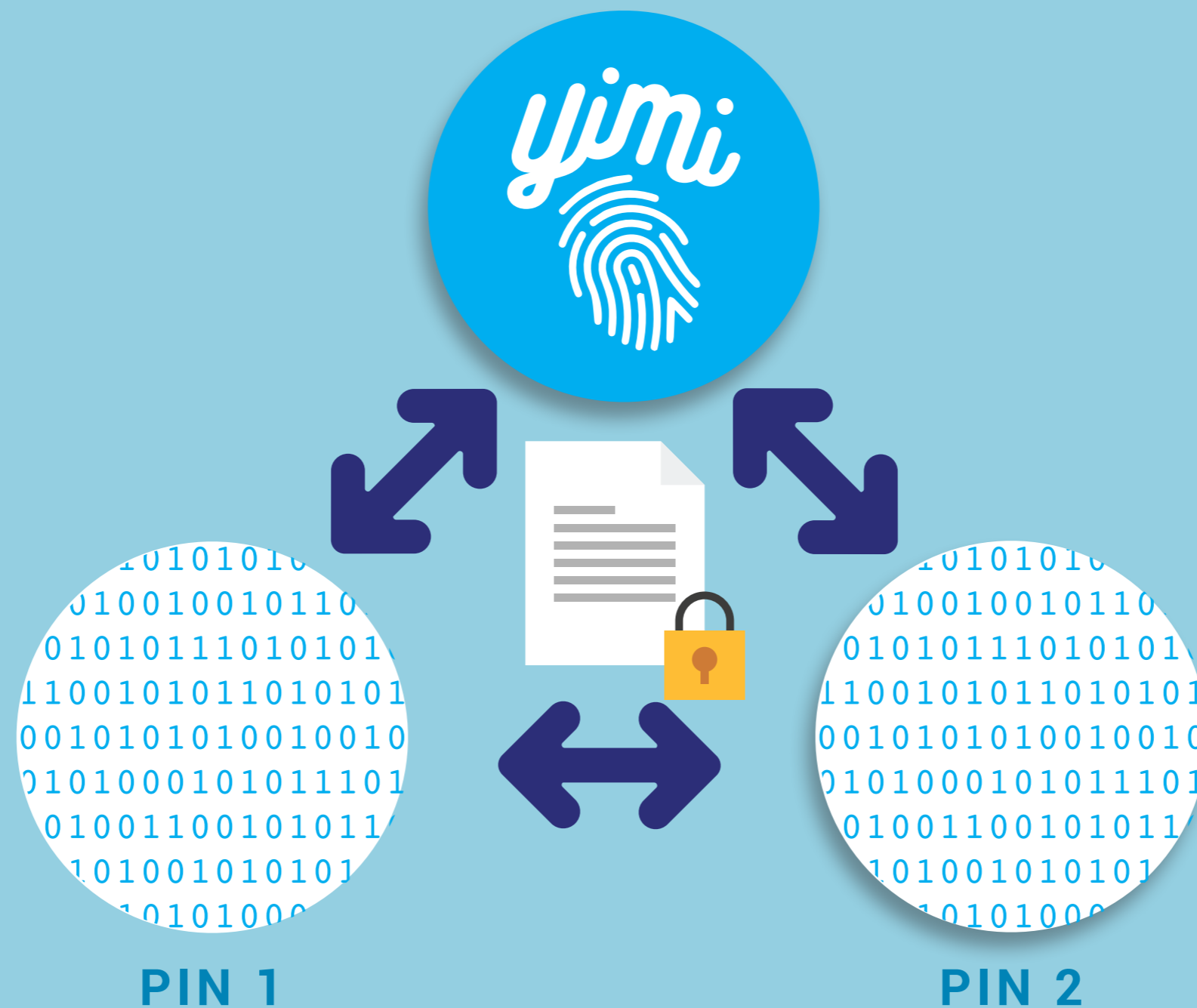


10

PIN1,#X,PIN2 is now stored on the YiMi blockchain server to create a permanent record for the transmission

YiMi SYSTEM

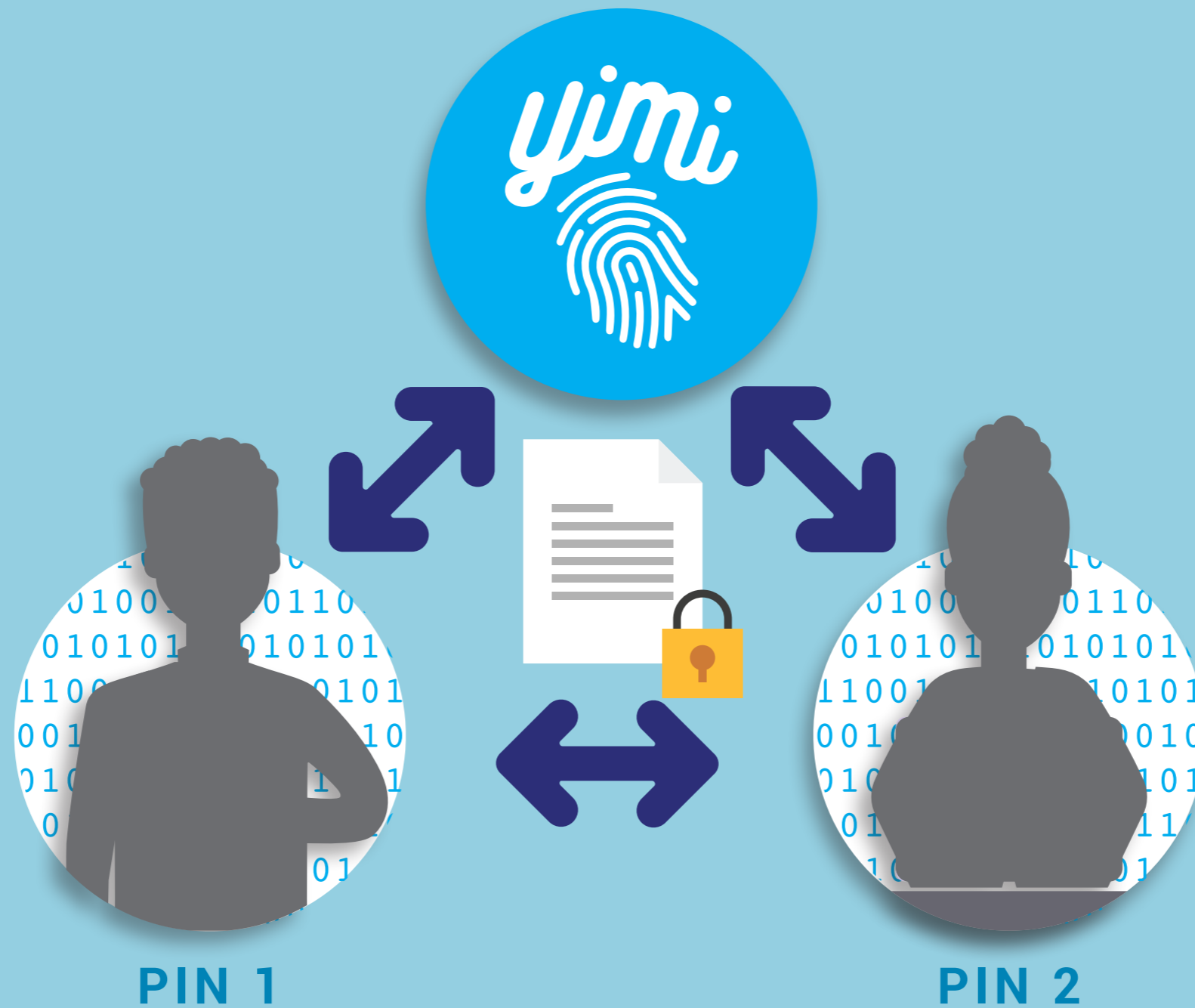




PIN1,#X,PIN2 is now stored on the YiMi blockchain server to create a permanent record for the transmission.

**INFORMATION STORED
BY YiMi**





YiMi also stores PIN1, PIN2 and public keys of the parties to which they were issued.

INFORMATION STORED
BY YiMi



**YiMi
PIN
SERVER**

**YiMi
BLOCKCHAIN
SERVER**

**YiMi
MOBILE
APP**

**SERVICE
PROVIDER
WEBSITE**

**SYSTEM
ARCHITECTURE**



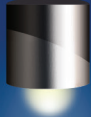


**YiMi
PIN
SERVER**

- Provides random numbers PIN 1 and PIN 2 to authorized users on request.
- Receives information hashes and matches them to PIN's requested and received.
- Once an information exchange has been completed and confirmed by both parties, writes an appropriate entry to the YiMi blockchain server.

**SYSTEM
ARCHITECTURE**





**YiMi
BLOCKCHAIN
SERVER**

- Is publicly readable but receives entries only from YiMi PIN server.
- A separate blockchain master user grants permission to write to the YiMi PIN server and the private keys which are stored offline.

**SYSTEM
ARCHITECTURE**





**YiMi
MOBILE
APP**

- Generates a public/private key pair at installation.
- Communicates with YiMi PIN server and with the service provider's interface using the service provider's API.
- Details of the API are provided by the YiMi PIN server when PIN 1 is submitted.

**SYSTEM
ARCHITECTURE**



- Will use the service provider's private key to sign request for PIN 1 from the YiMi PIN server.
- Provides the API for use by the client's mobile app.



**SERVICE
PROVIDER
WEBSITE**

**SYSTEM
ARCHITECTURE**





**IMPROVES SERVICE PROVIDER'S
BOTTOM LINE.**

SIMPLE TO USE.

EASY TO SCALE.

**PROVIDES CONFIDENCE, AUTOMATION,
AUDIT TRAIL, EFFICIENCY AND SECURITY.**

**INITIAL PATENT AND TRADEMARK
REGISTERED.**

**IN
SUMMARY**



yimi



PETRUS POTGIETER

petrus@yimi.pw

082 772 7990

KONSTANT BRUINETTE

konstant@yimi.pw

083 3910 104